



# Wi-Fi TECH CENTER

3501 W Howard St  
Skokie, IL 60076



**WEISS**  
PROPERTIES  
INCORPORATED



## THE WI-FI TECH CENTER

---

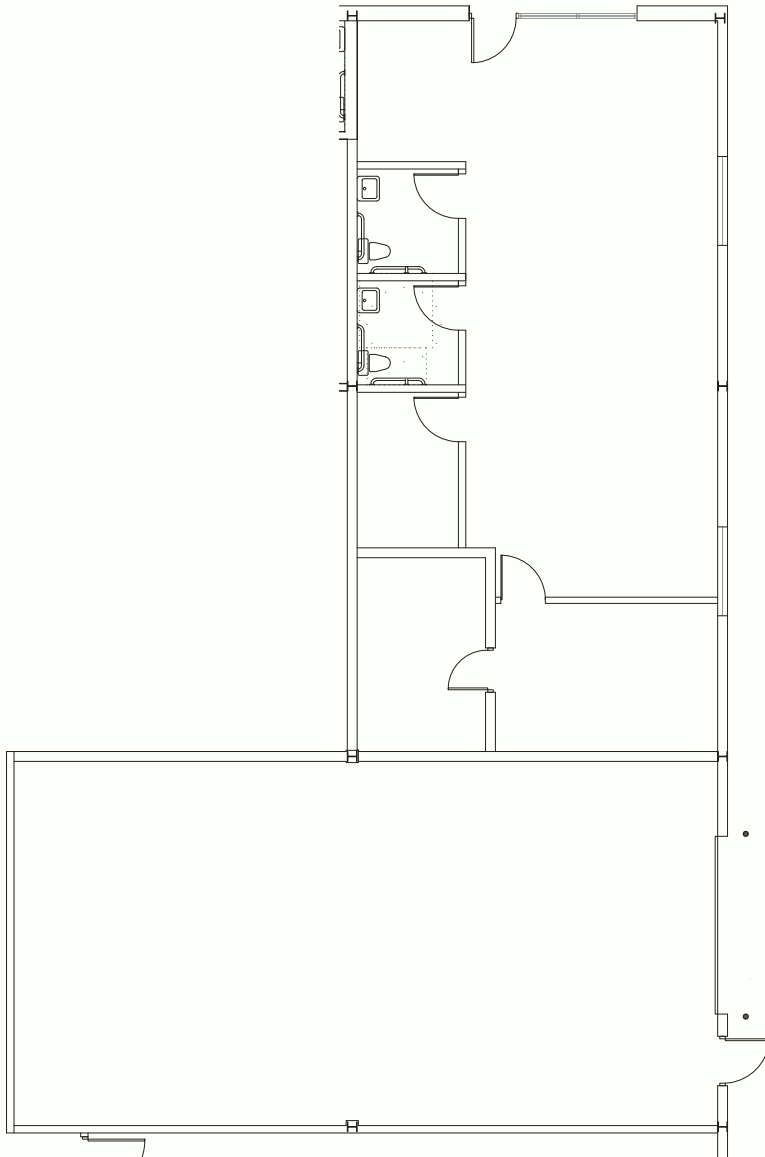
Located in the vibrant Skokie Industrial Park, this state-of-the-art industrial/flex building has units ranging in size from 869 SF to 21,322 SF, ceiling heights up to 20'6" clear, and heavy power (480V/three-phase). The building is fully secured and monitored and fully sprinklered. The WiFi Tech Center presents an ideal opportunity for any business looking for custom built units, ample room to expand, and access to industrial amenities including loading docks, warehouse storage, and fleet parking space. Conveniently located just five minutes east of the Edens Expressway (I-94), near restaurants & shops.

---

# BUILDING AMENITIES

- Fully Renovated State-of-the-Art Facility
- Fleet Parking Available
- Build to Suite Options
- 12'6"–20'6" Ceiling Clearance
- Interior & Exterior Loading Docks
- 10,000A/480V Heavy Duty Power
- Operable Skylights
- Security Cameras Onsite
- Temperature Controlled Units
- Maintenance Engineer Onsite
- Break Room





## SUITE 1A

---

Rare flex space with drive-in overhead door, combination of warehouse and office space, direct private entrance, and two private bathrooms. Additional 50-100 spaces for fleet parking available.

---



\$16/SF



2,752 SF



BUILD TO SUIT

---



# CONTACT

---

Abe Brimm

Office: 847.329.7600

Cell: 773.852.7607

[leasing@weissproperties.com](mailto:leasing@weissproperties.com)

---

